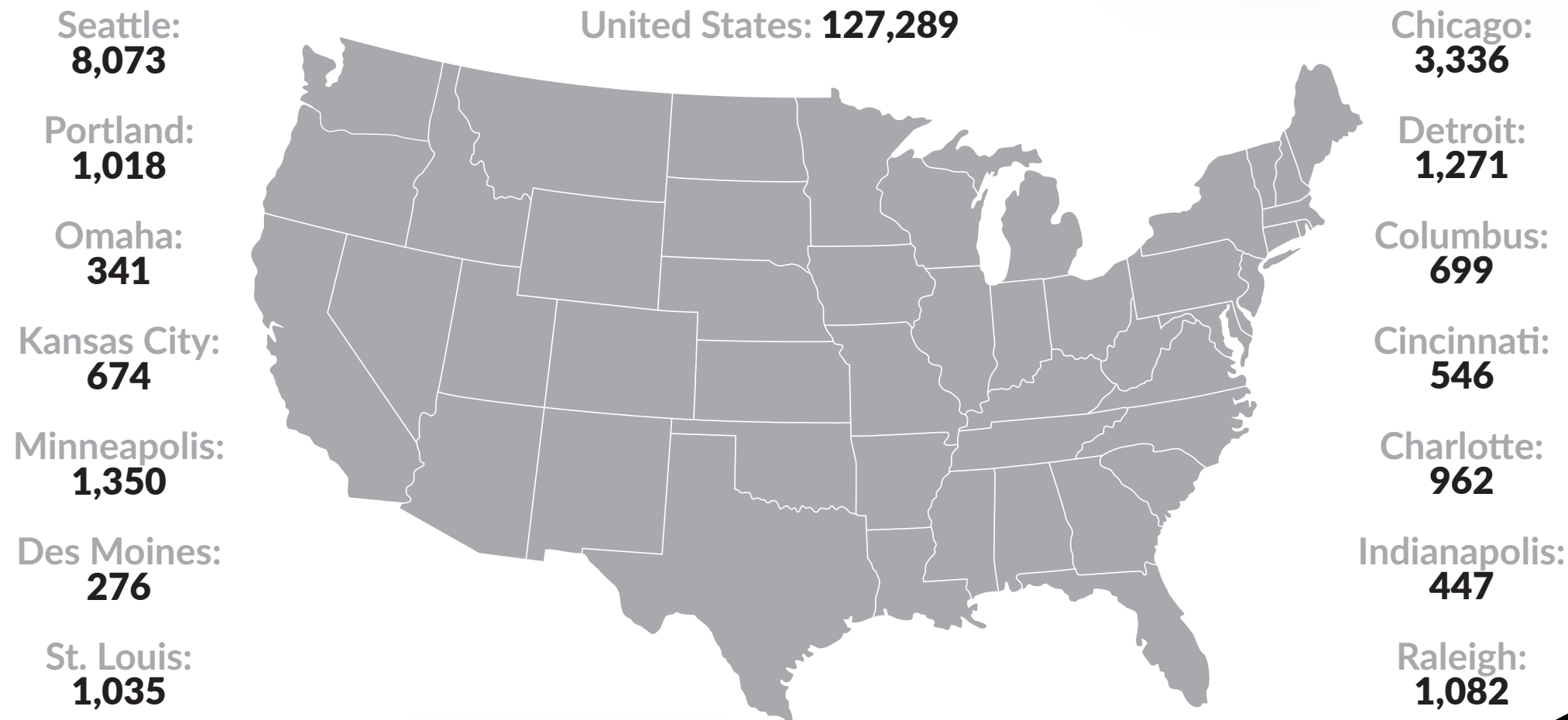




KNIGHT MOVES™

STRATEGIC ADVANCEMENT FOR SOCIAL EQUITY

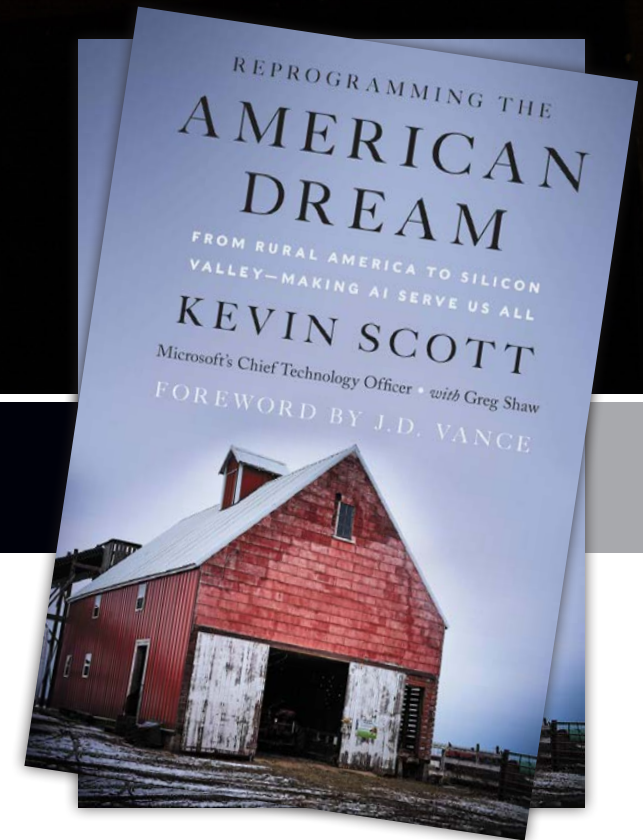






KEVIN SCOTT, MICROSOFT CTO

“I believe this work can give young people in rural parts of the country an opportunity for really great tech jobs, to build lives for themselves, and to build an economic foundation for themselves and for the community.”



**#1 WALL STREET JOURNAL
BEST SELLER**





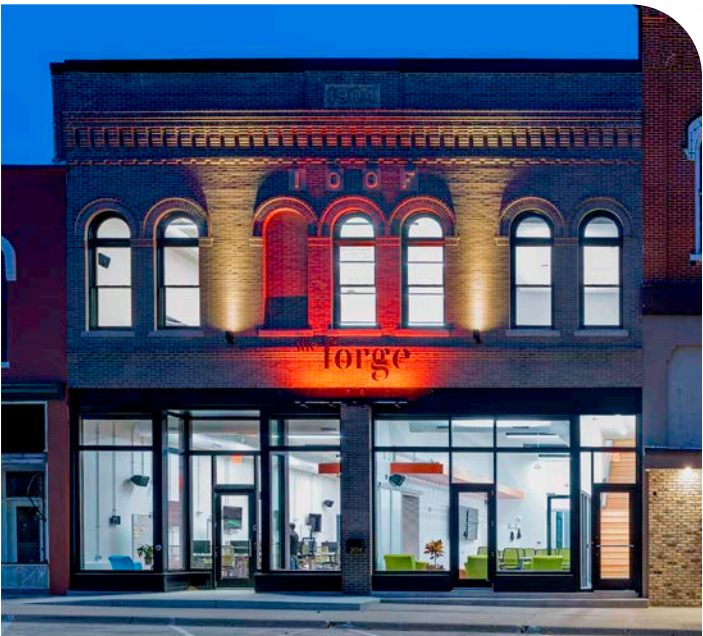
**KNIGHT MOVES IS AN ADD ON
TO COMMUNITY COLLEGE PROGRAMS
WHOSE GRADUATES RIVAL
FOUR-YEAR COLLEGE DEGREE GRADUATES.**

*INCLUDING JOB PLACEMENT ASSISTANCE
WHILE REMAINING LOCAL*

KNIGHT  MOVES.ORG

OPERATING FROM THE CENTER

RURAL



JEFFERSON, IOWA



KNIGHT MOVES



REGIONAL TECH HUB COMMUNITY



- Local Knight Moves Facility (2,500 – 4,000 SF)
- Local Knight Moves Employee
- Regional Technology Job Hub Community
- Focus on employers creating local employee offices
- Showcase for economic development and tourism
- Regional Events and Work Shops such as Code Camps
- Students can attend Culture Dish in person for better experience and in case they don't have good broadband access
- Campus for non-local participants to attend in person

KNIGHT MOVES FACILITY IDEALLY MATCHING AS MANY AS POSSIBLE:

- 2,500-4,000 SF space (5,000 - 8,000 SF if combined with co-working/incubator/accelerator space)
- Internet fiber to the building (required)
- Located on main street “town square” with walking access to restaurants
- Space rectangular in shape
- Windows facing street
- Located on first floor or with elevator access
- Newer mechanicals and as close to finished as possible
- In compliance with all codes
- In a building that has never flooded



KNIGHT MOVES PARTICIPANT COMMUNITY

- The program focuses on students in up to three high schools and mid-career workers in participating rural counties or with referrals from urban underserved focused nonprofit partners.
- Community Leadership, School Superintendent(s), and School Counselor(s) participation agreement.
- A place in the community with high speed broadband participants can use to attend Knight Moves program in case they don't have access to high speed broadband.
- The Community/County, Foundations, Local Employers, Utility Companies, State, and National employers, state and federal grants can fund additional participant sponsorships.



Must have components of junior tech talent development approach:

1. Advanced tech training that is minimally at the level of a four year computer science degree program.
2. Engaged technology industry professional who interacts with employers and is behind the training program.
3. 2-3 quality employers committed to hiring junior talent
4. ~75% senior / ~25% junior talent mix
5. Student engagement and recruiting strategy is critical! Heavy focus on grades 7-10.
6. A co-working space with high available and high speed Internet access IF your community has poor broadband options.





atlastcostudios.com

- Key Building Revitalization Strategy
- Housing Strategy
- Workforce Attraction Strategy
- Complete Streets Strategy
- Public Art Strategy
- Workforce Development Strategy
- Branding + Marketing Strategy
- Beautification + Wayfinding Strategy
- Opportunity Zone Prospectus Creation
- Economic Development Strategy
- Implementation + Funding Strategy
- Traffic Studies
- Blighted Building Incentive Program
- Tourism Enhancement Strategy
- Broadband Strategy
- Amenity Creation



[CLICK HERE TO CONTACT US](#)



THANK YOU

LINC KROEGER

M: (513)407-0042

LINC.KROEGER@KNIGHTMOVES.ORG

KNIGHT  **MOVES.ORG**



ADVANCING SOLUTIONS FOR THE PROBLEMS DISRUPTING OUR SOCIETY

